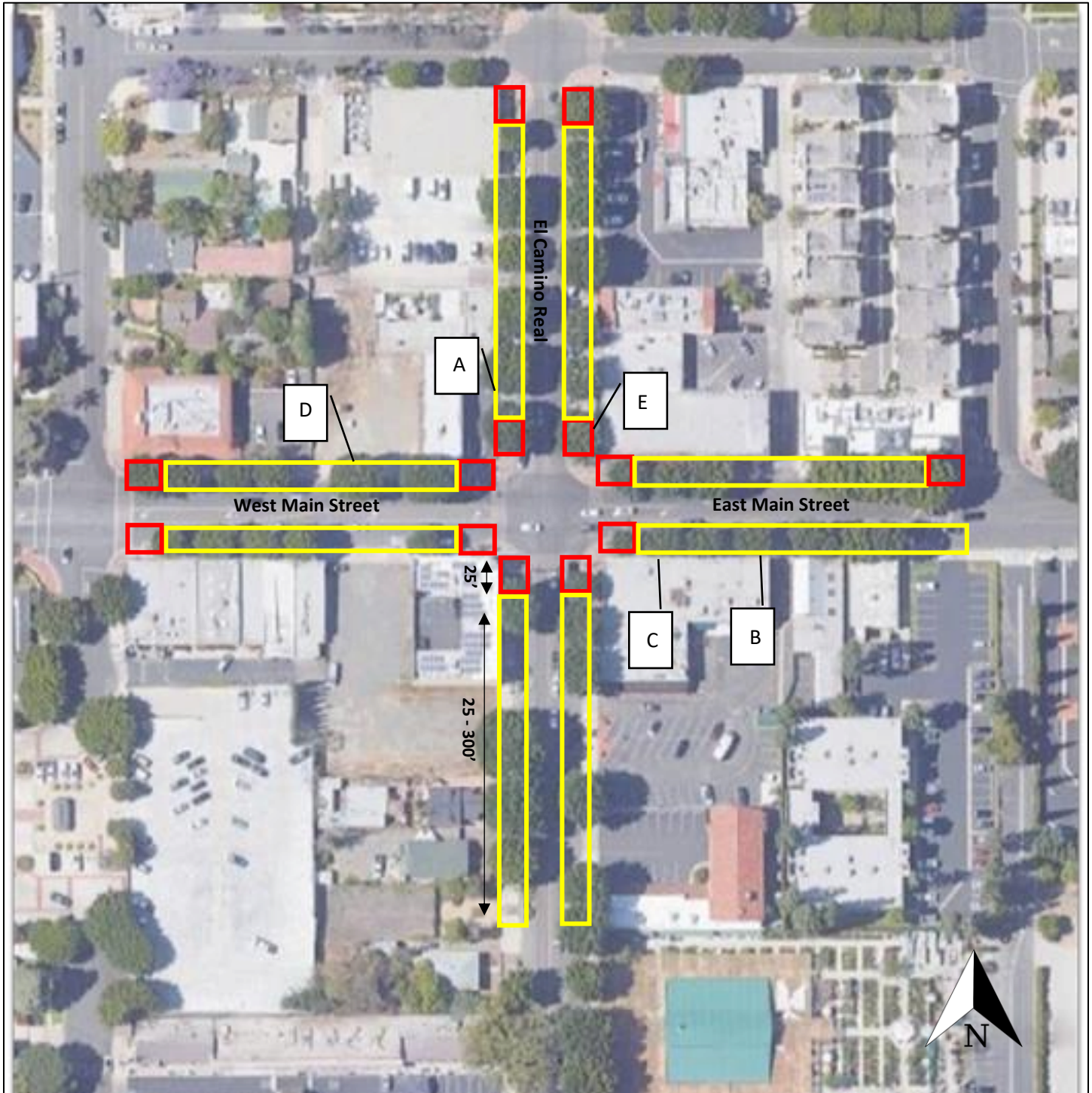


**Non-Commercial Signs in the Public Right-of-Way:  
Acceptable and Unacceptable Locations in the Old Town Commercial Core**



**Legend:**

- 25' from Intersection Not Allowed
- Acceptable Signs on Parkway between 25' and 300' from Intersection (Except within 10' from Driveway) \*
- A \ See Example Photographs on Page 3

\*Distance is measured from property line rather than curb

**Non-Commercial Signs in the Public Right-of-Way:  
Acceptable and Unacceptable Locations in the El Camino Real and Main Street Intersection**



Legend:

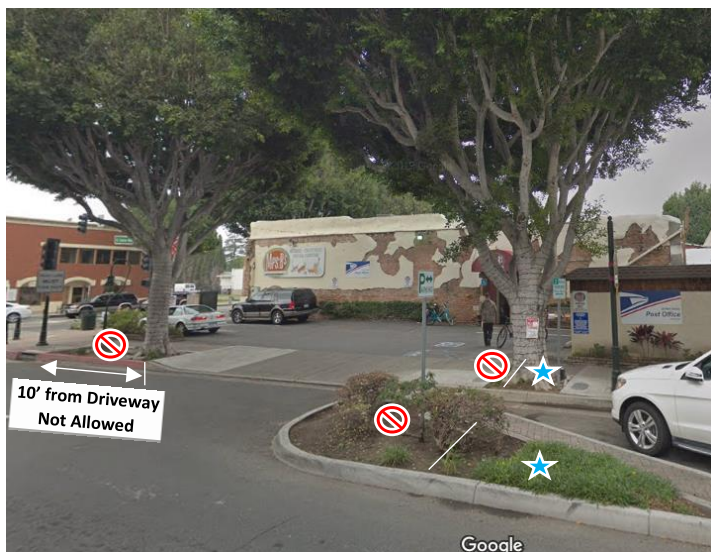
- Signs Allowed in Tree Wells & Parkways 25'-300' from Intersection  
(Except within 10' from Driveway)
- Signs Not Allowed 10' from Driveway or 25' from Intersection





## Examples of Acceptable & Unacceptable Locations

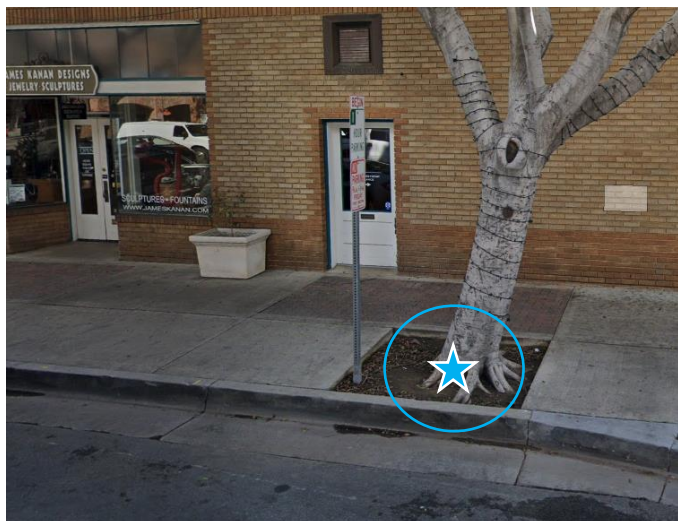
**Example A**



**Example B**



**Example C**





**Example D**



**Example E**



**Legend:**

-  Example of 10' from Driveway or 25' from Intersection Not Allowed \*
-  Example of Acceptable Locations for Signs between 25' and 300' from Intersection \*

\* Distance is measured from property line rather than curb